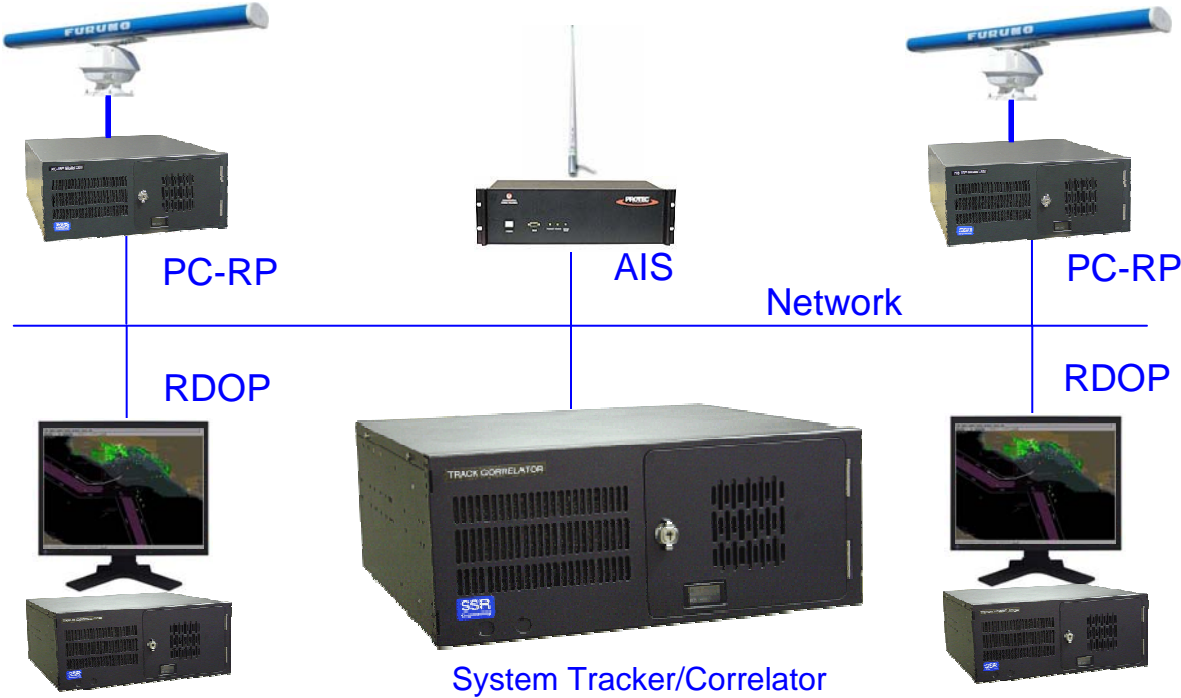




Providing Scalable Surveillance Solutions for Vessels, Ports, Waterways, and Offshore Facilities.

System Tracker

SSR Engineering's System Tracker correlates radar data from multiple radars, AIS, ELINT, and other sensors to generate high quality composite tracks based on all target data received.



Features:

- Correlates data from multiples radars and other sensors
- Eliminates TRACK HANDOFF problem
- Maintains thousands of tracks
- High and Low speed targets
- Public API allows integration with custom applications

www.ssreng.com

© SSR Engineering, Inc. 2556 W. Woodland Dr. Anaheim, CA 92801 (714) 229-9020

System Tracker

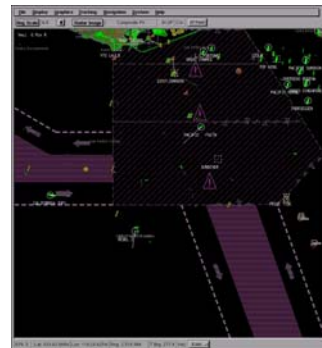
The System Tracker/Correlator by SSR Engineering is a flexible networked display that can be used in land based, ship based, or air based applications.

Wide Range of Radar Applications

The System Tracker/Correlator is a key element of any Port Security, Range Safety, Coastal Surveillance, Ship Navigation, or Vessel Traffic System (VTS), as well as Surface Search and Air Search Radar Systems.

Key Features

- Automatically correlates AIS with radar tracks
- Correlates with generic track input
- Maintain thousands of tracks
- Single track from multiple sensors
- Auto-acquire zones



Benefits

- Correlation of AIS, radars, and other sensors
- Eliminates track handoff problems
- Scalable design
- Low cost



For additional info contact: info@ssreng.com

www.ssreng.com

© SSR Engineering, Inc. 2556 W. Woodland Dr. Anaheim, CA 92801 (714) 229-9020